

EMC[®] Insignia Solution for Data Protection



EMC[®] Insignia Solution for Data Protection enables small and medium businesses (SMBs) to achieve fast, reliable, easy-to-manage data protection for all computers. It is ideal for SMBs that need fast backups and rapid restores without straining limited IT resources.

EMC Insignia Solution for Data Protection combines the speed and reliability of the new EMC CLARiiON[®] AX150 disk storage array with the performance and convenience of EMC Retrospect[®] 7.5 for Windows backup and recovery software.

Retrospect 7.5 for Windows protects data on networked servers, desktops, and notebooks running Windows, Macintosh, Linux, Solaris, and NetWare operating systems, as well as business-critical applications. It quickly streams backup data to the AX150, which delivers cost-effective, high-capacity disk storage. For archival and disaster recovery purposes, Retrospect later transfers data from the AX150 to tapes for long-term offsite storage.

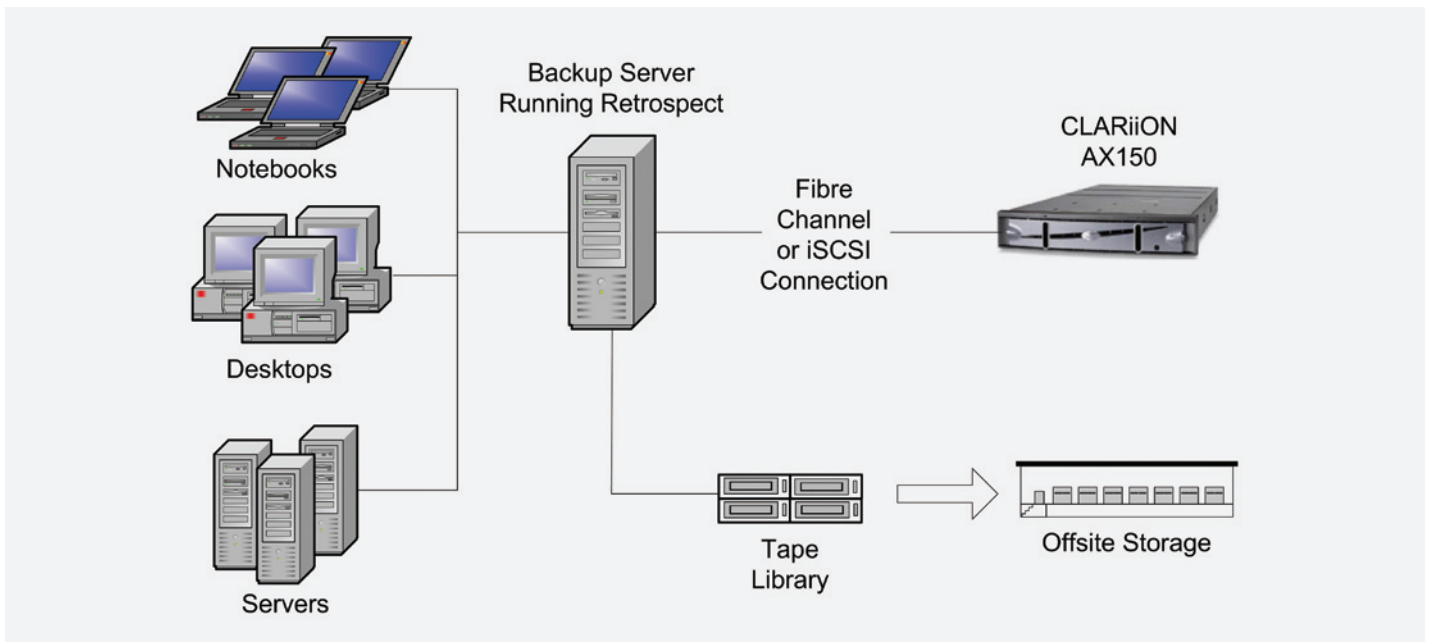


Figure 1 Network topology of EMC Insignia Solution for Data Protection

EMC® Insignia Solution for Data Protection

Fast backups and rapid restores

EMC Insignia Solution for Data Protection enables SMBs to achieve fast, easy-to-manage data protection that fully capitalizes on the performance of disk and the portability of tape. The AX150 combines the advanced functionality and data protection features of CLARiiON's industry-leading RAID array architecture with high-capacity Serial Advanced Technology-Attached II (SATA II) disk drives, delivering up to 6 TB of capacity in a compact 2U rack-mountable enclosure.

Retrospect's backup-to-disk features utilize the speed and efficiency of the AX150 networked storage system to protect the optimum amount of data in the shortest time. Retrospect also lets you verify backups outside the backup window, allowing you to back up twice as much data within a given period of time.

Achieve rapid restores by storing your most recent backup data—for example the last 30 days of backups—on the AX150 storage array, enabling you to recover data at the speed of disk. There's no need to locate, load, and unload tapes to perform your most common restores. Retrospect's User Initiated Restore capability enables Windows, Mac OS, and Linux users to restore their files via a Web browser without burdening IT personnel.

Protection for servers, desktops, and notebooks

EMC Insignia Solution for Data Protection provides automated protection for up to 15 servers or 300 desktop and notebook computers (or a combination thereof) running the most commonly used computer operating systems. Windows files that are open and in use are also fully protected. For critical Microsoft Exchange and SQL servers, integrated online protection can be added to the solution.

SMBs with multiple desktops and notebooks can also save hours of set up by using Microsoft System Management Server (SMS), Active Directory Group Policy, or other deployment tools to install the Retrospect Client software on networked Windows computers. After client software is deployed, Retrospect automatically identifies and logs in new Windows clients to ensure they are backed up regularly.

Automated, self-adjusting operations

Retrospect's patented technology automates common backup tasks and adjusts for changing network situations. If computers are ever inaccessible during a backup session or not fully protected due to an interruption in backup operations, Retrospect automatically assigns them a high priority at the next session. This is especially useful when protecting notebooks and desktops, which typically contain up to 80 percent of a business's

information, but which are not always connected to the network during scheduled backup periods. Retrospect eliminates the need to write custom backup scripts to ensure all computers are regularly and reliably protected.

Avoid weekly full backups

Other backup applications require time-consuming full backups each week to perform accurate restores. Retrospect enables you to perform fast incremental backups to disk forever without compromising restore accuracy. During each backup of a client computer, Retrospect creates a list of the client's hard drive contents. Retrospect then references these lists to restore the exact data needed for a prior point in time. With Retrospect you get perfect restores every time.

Self-maintaining disk backups

Retrospect ensures there is always plenty of space on the AX150 for new backups. Simply specify the number of backups you want to keep on disk. When a capacity threshold is reached, Retrospect can automatically delete older backups or send a notification to the administrator. By transferring backups to tape each week for offsite storage and disaster recovery, you can always retrieve data groomed from the AX150 if you need it. Retrospect keeps track of all backup data wherever it is located.

Secure offsite tape storage

For offsite data archiving and a sound disaster recovery plan, copy data from the AX150 to your preferred tape device and store tapes at a secure offsite location. This strategy ensures that one copy of your backup media survives in the event of a fire, flood, or other disaster at the workplace.

Retrospect automates copying backups from disk to tape and simplifies administration. Synthetic full backups can be created without affecting users or the network. Tapes brought onsite can be quickly updated from backups residing on the AX150. To satisfy compliance requirements and prevent unauthorized access to data if tapes are lost or stolen, Retrospect provides government-certified 128-bit or 256-bit AES encryption on backup media.

World-class support

With EMC Insignia you gain the benefits of software and hardware designed for SMBs and the know-how of the global leader in storage and storage management. The EMC Insignia Solution for Data Protection comes with one year of unlimited 9x5 technical support to assist with installation, usage, or upgrade of the solution components, plus free upgrades to new software versions within that year.

CLARiiON AX150

Feature	Benefit
RAID Reliability	Renowned CLARiiON RAID architecture ensures that you never lose your backup data if a disk fails.
Added Safety	The single-controller AX150 has 512 GB of battery-backed cache to protect against data loss in the event of power loss for up to 96 hours.
Performance	The AX150 utilizes high capacity 500-GB Serial ATA II disk drives.
Scalability	EMC Insignia Solution for Data Protection comes with 3 TB of raw storage. As your business grows, add disks to provide up to 6 TB for backup to disk or shared storage.
Connectivity	Connect the AX150 to the Retrospect backup server directly or over a network using iSCSI or Fibre Channel.

Retrospect

Feature	Benefit
Protect heterogeneous networks	Back up Windows, Mac OS X, Mac OS classic, Red Hat Linux, SUSE Linux, Solaris, and NetWare computers automatically to a central Windows backup server.
Protect entire computers	Back up the operating system, system configuration, device drivers, and settings in addition to user data on networked computers.
Advanced disk-to-disk-to-tape backup	Use disk daily for simpler, faster, more reliable backups and restores. Copy to tape weekly for offsite storage and disaster recovery.
Automatic grooming of disk backups	Establish a policy to retain a set number of backups and automatically remove older data to make room for newer backups.
Synthetic full backups	Utilize existing backups on disk to create a new full backup on tape for offsite storage without affecting systems, users, or your network.
Desktop and notebook backup	Detect and protect desktops and notebooks, when they become available on the network, rather than on a fixed schedule.
User-initiated restores	Windows, Mac OS, and Linux users can restore files from the backup server via a Web browser without burdening IT personnel.
Open file backups	Protects Windows NTFS file systems that are open and in use.

Retrospect Continued

Feature	Benefit
No need to perform a full backup each week	Other backup applications limit your ability to perform incremental backups because restores become increasingly inaccurate—you must perform time-consuming full backups regularly, often weekly. With Retrospect you don't need to run weekly full backups to get perfect restores every time.
Unparalleled restore accuracy	Retrospect automatically compiles a list of data on the hard drive prior to each backup. Retrospect uses this list to select the exact data needed to restore a computer to a point in time without returning unwanted files that were previously deleted, moved, or renamed.
Perform fast incremental backups	Because Retrospect delivers accurate restores without requiring weekly full backups, you can perform fast incremental backups daily, saving time by backing up only new or changed data on an on-going basis.
Self-adjusting backup operations	Backup operations are automatically adjusted to ensure that all computers are protected without requiring manual intervention by IT staff. With Retrospect there is no need to write new backup scripts each day to keep backups running smoothly.
AES encryption	Encrypt backups on CD/DVDs, disk, or tapes using 128-bit or 256-bit AES encryption, the strongest levels of encryption available.
Push installation of client software	Utilize Active Directory Group Policy or Microsoft Systems Management Server (SMS) to push the Retrospect client out to new Windows computers as they are added to your network.
Automatic client login	After the Retrospect client has been installed onto a networked Windows computer, Retrospect will automatically find the client computer and log it in so that it can be backed up. Existing clients can be updated as required by the Retrospect backup server.

EMC Insignia

EMC Retrospect and the CLARiiON AX150 are part of the EMC Insignia line of software and hardware products, which enables small and medium businesses (SMBs) to store, manage, protect, and share vital business information. To learn more about EMC Insignia, contact your authorized EMC Velocity SMB channel partner or visit www.emcinsignia.com.

72000406V1